



File Name: canon 1d mk iii manual pdf.pdf

Size: 4383 KB

Type: PDF, ePub, eBook

Category: Book

Uploaded: 11 May 2019, 21:10 PM

Rating: 4.6/5 from 629 votes.

Status: AVAILABLE

Last checked: 6 Minutes ago!

In order to read or download canon 1d mk iii manual pdf ebook, you need to create a FREE account.

[**Download Now!**](#)

eBook includes PDF, ePub and Kindle version

[Register a free 1 month Trial Account.](#)

[Download as many books as you like \(Personal use\)](#)

[Cancel the membership at any time if not satisfied.](#)

[Join Over 80000 Happy Readers](#)

Book Descriptions:

We have made it easy for you to find a PDF Ebooks without any digging. And by having access to our ebooks online or by storing it on your computer, you have convenient answers with canon 1d mk iii manual pdf . To get started finding canon 1d mk iii manual pdf , you are right to find our website which has a comprehensive collection of manuals listed.

Our library is the biggest of these that have literally hundreds of thousands of different products represented.



Book Descriptions:

canon 1d mk iii manual pdf



If the camera or memory card is faulty and the images cannot be recorded or downloaded to the personal computer, Canon cannot be held liable for any loss or inconvenience caused. Copyrights Copyright laws in your country may prohibit the use of your recorded images of people and certain subjects for anything but private enjoyment. If anything is missing, contact your dealer. Doing so may cause fire or a health hazard. If the product does not work properly or requires repair, contact your dealer or your nearest Canon Service Center. If you accidentally drop the camera into water, promptly consult your nearest Canon Service Center. Wipe off any water droplets with a dry cloth. If the camera has been exposed to salty air, wipe with a wellwrung wet cloth. Attach the lens. p.35 Align the red dot. Set the lens focus mode switch to. p.35 Insert a memory card. p.32 The left slot is for the CF card, and the right slot is for the SD card. Battery Pack LPE4 is dedicated to Canon only. Using it with a nonCanon battery charger or product may result in malfunction or accidents for which Canon cannot be held liable. An unused charged battery will still gradually lose its power over time. After recharging the battery, detach it and unplug the power cord from the power outlet. Also, if a battery other than the LPE4 is attached to the charger, the lamps will blink between red and green including the. Remove the battery compartment cap. Grasp both sides of the cap and pull it out. Insert the battery. Insert the battery firmly all the way, turn the release handle as shown by the arrow. The actual number of shots may be fewer than indicated above depending on the shooting conditions. Connect the DC plug. Connect the DC Coupler's plug to the AC adapter's DC terminal. Connect the power cord. Images can be recorded with at least one memory card installed in the camera. <http://dp SCNADIA.org/userfiles/dlse-manual-california.xml>

- **canon 1ds mk iii manual pdf, canon 1d mk iii manual pdf, canon 5d mk iii manual pdf, canon 1d mk iii manual pdf 2016, canon 1d mk iii manual pdf download, canon 1d mk iii manual pdf free, canon 1d mk iii manual pdf online.**



If both card slots have a card, you can select which card to record images with or record the same images simultaneously on both cards. The number of possible shots will be displayed on the top LCD panel and in the viewfinder. The rear LCD panel will indicate which memory cards has been Memory card selection icon installed. While the access lamp is lit, never do any of the following. Remove the rear lens cap and the body cap by turning them as shown by the arrow. Attach the lens. Align the red dots on the lens and camera and turn the lens as shown by the arrow until it snaps in place. Position for when you do not use the camera. The camera operates. The camera and dial operate. p.38 Whenever you set the power switch to. Even during the menu display, image playback, and image recording, you can instantly go back to shootingready by pressing the shutter button halfway. When you press a button, its function remains selected for 6 seconds 9. During this time, you can turn the Horizontal shooting Vertical shooting 1. Wrap your right hand around the camera grip firmly. 2. Hold the lens bottom with your left hand. 3. While looking at the LCD monitor, you use the button on the camera back and the dials.. Press the button to display the menu. Select a tab. Turn the dial to select a tab. Select a menu item. Turn the dial to select the menu item, then press Set the desired language. Turn the dial to select the language, then press. The language will change. Turn the dial to select the card, then press.The camera's default settings will be as shown below. Shooting Settings ImageRecording Settings Shooting mode P Program AE Record func. Standard AF mode OneShot AF Image size L Large AF point selection Automatic selection. When the camera is ready to shoot, you can press the button to see the image settings.

p.<http://www.artcolorspress.com/userfiles/dls-software-manual.xml>

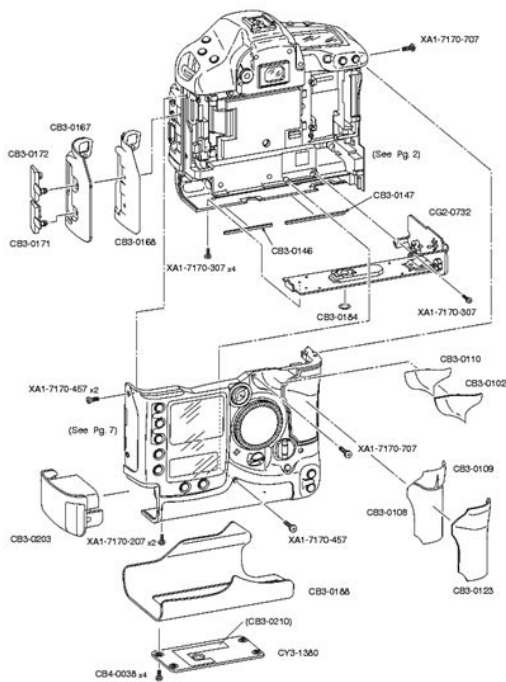


186 The single image size, number of possible shots, and maximum burst during continuous shooting are based on Canon's testing standards JPEG quality 8, ISO 100, Picture Style Standard. Check the viewfinder or top LCD panel for the current number of possible shots. The RAW image is transferred to a personal computer where software provided is used to adjust the image as needed. Select the image size. Turn the. A higher ISO speed number indicates a higher sensitivity to light. Therefore, a high ISO speed is suited for low light and moving subjects. However, the image may look more coarse with noise, etc. Press the button. When the camera is ready to shoot, press the button. The Picture Style screen will appear. Select a Picture Style. To obtain naturallooking, blackandwhite images, set a suitable white balance. Do not use this Picture Style if you want color JPEG images. Press the button. Select a Picture Style. Turn the dial to select a Picture Style, then press the. To shoot with the Picture Style you modified, follow step 2 on the preceding page to select the Picture

Style and then shoot. Turn the dial to set the parameter as desired, then press. Press the button to register the new Picture Style. The Picture Style selection screen will then reappear. Normally, the Auto setting will obtain the correct white balance. If natural looking colors cannot be obtained with, you can set the white balance manually to suit the respective light source. Up to five Custom white balance data can be registered to the camera. You can also append a name caption to the registered Custom white balance data. The plain, white object should fill the center spot metering circle. Set the lens focus mode switch to, then focus manually. p.86 Shoot the white object so that a standard exposure gray is obtained. If it is underexposed or overexposed, a correct white balance setting might not be obtained. This image saved in the memory card can then be registered for Custom WB.

Select the registered Custom WB Registered images On the Custom WB registration screen, select the No. Enter any name. Press the button, and the text palette will be highlighted in a color frame and text can be entered. Operate the. Press the button. Press the button once or twice to display the white balance on the rear LCD panel's upper right. This adjustment will have the same effect as using a commercially available color temperature conversion filter or color compensating filter. Each color can be corrected to one of nine levels. Users familiar with using color temperature conversion or color compensating filters will find this feature handy. With this camera, you can set the color space for captured images to sRGB or Adobe RGB. For normal images, sRGB is recommended. When an external media is used via the Wireless File Transmitter WFTE2 optional, the icon will appear as the third recording media. It can be selected in the same way as with the CF card. The number of shots remaining displayed on the top LCD panel and in the viewfinder is based on the card having less capacity than the other card. A folder can contain up to 9999 images file No. 0001 9999. When a folder becomes full, a new folder with a higher oneup folder number is created automatically. However, you can change it. With "User setting1,". Then press to enter Enter the required number of alphanumeric characters, then press the button. The new file name will be registered and the screen in step 2 will reappear. The captured images are 7E3B0001.jpg Ex. assigned a sequential file number from 0001 to 9999 and saved to one folder. You can also change how the file number is assigned. Whenever the memory card is replaced or a new folder created, the file numbering starts from 0001. This is convenient if you want to organize images according to memory cards or folders. You can select any one of the 19 crosstype points to match your composition.

CANON DIGITAL CAMERA EOS-1D



<https://formations.fondationmironroyer.com/en/node/8980>

You can also select the AF mode to match the shooting conditions and subject and select the best drive mode. On the lens, set the focus mode switch to. Press the button. Select the AF mode. Turn the dial to select the AF mode. If this occurs, a picture cannot be taken even if the shutter button is pressed completely. Recompose the picture and try and focus again. Manual AF Point Selection You can manually select any of the 19 crosstype AF points. This is best when you want to focus the target subject at will, or autofocus quickly while composing the shot. Subjects in low light Extremely backlit and reflective subjects Example Car with a reflective body, etc. Select the drive mode. While looking at the top LCD panel, turn the dial. Select either or. Look at the top LCD panel and turn the dial to select or. k 10sec. selftimer l 2sec. Focus the subject and press the shutter button completely. Also, with an EXseries Speedlite, you can take flash pictures as easily as normal shooting without flash. First set the power switch to. Select the metering mode. While looking at the top LCD panel, turn the dial. MultiSpot Metering With multiple spot meter readings, you can see the relative exposure levels of multiple areas in the picture and set the exposure to obtain the desired result. Set the metering mode to r spot metering. Press the button. Select. Turn the dial to select. Compose the shot and press the shutter button completely. Increase the ISO speed or use flash. If the "8000" shutter speed and the minimum aperture blink, it indicates overexposure. This is called shutterpriority AE. A faster shutter speed can freeze the action or moving subject. Or a slower shutter speed can create a blurred effect, giving the impression of motion. Turn the dial to set a slower shutter speed until the aperture stops blinking or set a higher ISO speed. If the minimum aperture blinks, it indicates overexposure. Turn the. This is called aperturepriority AE.

<https://estacionsurmadrid.avanzagrupo.com/images/brother-pe-180d-service-manual.pdf>



If the “8000” shutter speed blinks, it indicates overexposure. To determine the exposure, refer to the exposure level indicator in the viewfinder or use a commercially available handheld exposure meter. You can make the image look brighter increased exposure or darker decreased exposure. Check the exposure level indicator. Hold down the. Press the button to lock the exposure, then recompose and take the shot. This is called bulb exposure. Use bulb exposures for night scenes, fireworks, the heavens, and other subjects requiring long exposures. To prevent this, slide the eyepiece shutter lever as shown by the arrow to shutter the eyepiece. Connecting the Remote Switch You can connect Remote Switch RS80N3 or Timer Remote Controller TC80N3 both optional or any EOS accessory equipped with an N3. You can easily do the flash operations below. For detailed instructions, see the EXseries Speedlite’s instruction manual. ETTL II Autoflash ETTL II is an autoflash exposure system incorporating improved flash exposure control and lens focusing distance information, making it more precise than the previous ETTL system evaluative flash metering with preflash. Use an 18% gray card and an EXseries Speedlite which has manual flash mode. This is called “Live View shooting.” When using Live View shooting, using a hard disktype CF card such as MicroDrive is not recommended. Use a memory card instead. You can also magnify the realtime image on the LCD monitor by 5x or 10x so you can focus more precisely. The Live View image will appear on the LCD monitor in realtime with 100% field of view. With the video cable provided connecting the camera to a TV set, you can view images on the TV. Use to select the focusing frame in full view. If you press straight down, the focusing frame will return to the center. Press the. Press the to check the image composition in full view. Check the display. Take the picture. Press the shutter button completely.

<https://estacionsurmadriv.avanzagrupo.com/images/brother-pe150-embroidery-machine-manual.pdf>



The picture will be taken and the captured image is displayed on the LCD monitor. After the image review ends, the camera will return to Live View shooting automatically. For images taken with another camera The camera might not be able to properly display images captured with a different camera or edited with a personal computer or whose file name was changed. Press the button. The last captured image or last image viewed will appear. Select the image. To playback images starting with the last image, turn the dial counterclockwise. To playback images starting with the first captured image, turn the dial clockwise. To obtain more image detail in the overexposed areas, set the exposure compensation to a negative amount and shoot again. During image playback, press the button. The 4image index display will appear. The currentlyselected image will be highlighted in a blue frame. Press the button again to switch to the 9image index display. Magnify the image. During image playback, press the button. The image will be magnified. To increase the magnification, hold down the button. The image will Magnified area continue to be magnified until it reaches the maximum magnification. Select the image. Turn the dial to select the image to be rotated. You can also select an image on the index display. Turn off the camera and the television before connecting them. Connect the camera to the TV. Protecting a Single Image Playback the image to be protected. Protect the image. During image playback, press the button. When an image is protected, the icon will appear above the image. Press to protect or unprotect the image. Once an image is protected, it cannot be erased by the camera's erase function. Total images selected Turn the dial to select the image to be copied, then press. The icon will appear on the upper left of the screen. Press the button to display the threeimage view. When the copying is completed, the result will be displayed. Protected images p.123 will not be erased.

Once an image is erased, it cannot be recovered. Make sure you no longer need the image before erasing it. To prevent important images from being erased accidentally, protect them. Adjust the brightness. While referring to the gray chart, turn the. The setting of this feature can be changed. The Dust Delete Data can also be appended to the image so that any remaining dust spots can be removed automatically by the Digital Photo Professional provided software. Normally, you need not be aware of this operation. However, you can execute the sensor cleaning at anytime as well as disable it. However, in case visible dust still remains, you can append the Dust Delete Data to the image to later erase the dust spots. If the sensor needs to be cleaned directly, having it done by

a Canon Service Center is recommended. Before cleaning the sensor, detach the lens from the camera. Canon's PictBridge Web Site The Web site below gives more information on using your Canon camera with various printers, such as which paper types to use. Connecting the Camera to a Printer Set the camera's power switch to. Set up the printer. For details, see the printer's instruction manual. PictBridge Press the button. The image will appear, and the icon will appear on the upper left to indicate that the camera is connected to a printer. The camera cannot be used with printers compatible only with CP Direct or Bubble Jet Direct. Some settings might not be available. For details, see the printer's instruction manual. Printerconnected icon Select the image to be printed. Check that the icon is displayed on the upper left of the LCD monitor. When using a Canon printer and Canon paper, read the printer's instruction manual to check what paper types can be used. Set as necessary. If you need not set any printing effects, go to step 5. The screen display may differ depending on the printer. Turn the dial to select the item on the upper right, then press. If the. Set as necessary.

<https://www.pferde-fuer-unsere-kinder.de/wp-content/plugins/formcraft/file-upload/server/content/files/16270c02174ec5---bottle-top-dispenser-manual.pdf>

Turn the dial to select, then press. Turn the dial to select the desired setting, then press. Set the number of copies. Set as necessary. Turn the. For details, see the printer's instruction manual. Error Messages If a problem occurs during printing, an error message will appear on the camera's LCD monitor. When the icon is displayed next to, press the button. You can then adjust the printing effect. What can be adjusted or what is displayed will depend on the selection made in step 4. Do the trimming right before printing. If you set the trimming and then set the print settings, you may have to set the trimming again. Multiple, thumbnail images are printed on Index one sheet. Print type Both Prints both the standard and index prints.Press the button to display the threeimage view. To return to the single image display, press the button. After completing the print order, press the. If the computer software EOS DIGITAL Solution Disk CDROM provided with the camera has been installed in your personal computer, you can easily transfer the images without operating the. Preparation for Image Transfer Connect the camera to the personal computer. All images All the images in the memory card will be transferred. The saved settings can also be registered to the camera. Select the group. Turn the dial to select C.Fn I IV, then press. Select the Custom Function No. Custom Function No. Turn the dial to select the Custom Function No., then press. Note that the Custom Function numbers differ from previous EOS1Dseries cameras. AEB will also be canceled when bulb exposure is set or the flash is ready to fire. 1 Off The AEB and WBBKT settings will be retained even when the power switch is set to. With automatic AF point selection, spot metering will be at the viewfinder center. C.Fn I 8 Safety shift 0 Disable. Disable Pressing the button will lock the exposure AE lock. Enable By holding down the. The dynamic range is expanded from the standard 18% gray to bright highlights.

The gradation between the grays and highlights becomes smoother. With setting 1, noise in the shadow areas may be slightly more than usual. While the button is pressed, AF operation with the camera is disabled. 2 AE lock When the button is pressed, AE lock is applied. Do this adjustment only if necessary. Note that doing this adjustment may prevent correct focusing from being achieved. You can make fine adjustments of the AF's point of focus. Effective when it is difficult to track a moving subject with just one AF point. Press the button again to return to the original AF point. When the camera is ready to shoot, you can press. 0 Normal disabled 1 White balance While looking at the rear LCD panel, you can change the WB. 2 Image size While looking at the rear LCD panel, you can change the memory card and image size. In the manual exposure mode, the direction of the and dials will be reversed. The shutter button can still be used to shoot. Disable The timer length is set to the default. Register You can set the 6sec. You can thereby simulate framing for medium and large format film sizes such as 6x6 cm, 6x4.5 cm, and 4x5 in. This aspect ratio

information will be appended automatically to the captured image. You can register a different set of Custom Function settings for different shooting situations such as sports, snapshots, and landscapes. You can then instantly apply a registered set of Custom Function settings. The numbers of options changed from the default setting are displayed in blue. You can register the top layer of items under each menu tab and any Custom Function. With the camera ready for shooting, press the. The camera settings will be saved to the memory card, and the screen in step 2 will reappear. This is convenient when you want to instantly switch to frequently used shooting settings. The back of this chapter also has an index to make it easier to look up things. You can check the battery's condition on a menu screen.

Remaining battery level displayed by the battery check display p.29 in 1% increments. If this Troubleshooting Guide does not resolve the problem, contact your dealer or nearest Canon Service Center. Power The battery cannot be recharged with the battery charger provided. The memory card is not properly inserted. p.32 If the memory card is full, replace the card or delete unnecessary images to make room. Or if a notfull memory card is inserted in the other card slot, switch the recording to that card. When using Live View shooting, use a memory card a hard disktype CF card such as MicroDrive is not recommended. A hard disktype CF card requires a lower temperature range for operation than with normal memory cards. This may resolve the problem. If the same error keeps appearing, there may be a problem. Write down the error code and consult your nearest Canon Service Center. The camera's specifications and exterior are subject to change without notice. If a problem occurs with a nonCanon lens attached to the camera, consult the lens maker. Image Conversion Factor. CompactFlash is a trademark of SanDisk Corporation. Windows is a trademark or registered trademark of Microsoft Corporation in the United States and other countries. Macintosh is a registered trademark of Apple Corporation in the United States and other countries. EOS M and EOS R Full Frame mirrorless ranges deliver the power of DSLR in the body of a compact camera. Register your product and opt in for exclusive offers and discounts. Canon EOS1D X Mark III DSLR houses a 20.1 MP fullframe CMOS sensor pairs with DIGIC X image processors delivers stunning image quality, ISO range of 100102400 expandable to 50819200, 16fps continuous shooting in optical viewfinder and 20fps in Live View mode. The EOS1D X Mark III incorporates a 191point AF system with 155 crosstype points offers accurate focusing and fast tracking performance.

The Dual Pixel CMOS AF has 90% horizontal and 100% vertical coverage for fast and accurate autofocus in Live View. The EOS1D X Mark III supports uncropped DCI 4K 4096x2160 video recording up to 60fps, as well as RAW 5.5K 5472x2886 video at 60 fps. The Canon Log with 10bit 422 color deliver 12 stops of dynamic range. Other highlights include fully weathersealed magnesium alloy body, 3.2inch LCD touchscreen features touch focus control, Gigabit Ethernet port, builtin WiFi, Bluetooth and GPS and ability to capture 10bit stills using the HEIF file format offers wider dynamic range. This page requires Javascript. Modify your browsers settings to allow Javascript to execute. See your browsers documentation for specific instructions. To install your download click on the name of the downloaded file. Recommended Software File Name Date File Size Optional Software File Name Date File Size Recommended Manuals File Name Date File Size Optional Manuals File Name Date File Size The sole warranty, if any, with the respect to such nonCanon brand items is given by the manufacturer or producer thereof. This limited warranty covers all defects encountered in normal use of the Product, and does not apply in the following cases If the problem cannot be corrected over the telephone, you will be asked to follow the applicable procedures for MAILIN SERVICE. Note that a dated proof of purchase is required at the time of service. MAILIN SERVICE is a program under which your Product is repaired by a Canon U.S.A. or a Canon Canada authorized service center for the Product. Authorized service center information can be obtained by visiting www.canontechsupport.com US customers only or by contacting the Canon U.S.A., Customer Care Center or Canon Canada Customer Information Centre

at 1800OKCANON 18006522666. You will be given the name, address and phone number of an authorized service center.

It is your responsibility to properly package and send the defective Product, together with a copy of your dated proof of purchase, a complete explanation of the problem and a return address to the authorized service center at your expense. Do not include any other items with the defective Product. The Product covered by this limited warranty and proven to be defective upon inspection will be repaired and returned to you without charge by the authorized service center. Any Product received by the authorized service center that is not covered by the limited warranty will be returned unrepaired, or at the discretion of the authorized service provider, you may receive a written estimate of repair at such cost as the service center may establish from time to time. Bracketing order can be changed via C.Fn I5. Scroll down to easily select items to add to your shopping cart for a faster, easier checkout. Visit the Canon Online Store Adapter EcC, EdC Designed for use in warm and humid or cold weather when fogging is most likely to occur, and attaches easily to reduce condensation and help you maintain a clear view of your subject. Exact battery info can be viewed on the camera's menu. With three lens elements in three groups, chromatic aberration and distortion are effectively corrected to give crystal-clear images. Eye fatigue is not a problem even after prolonged use. Holds 12 Camera bodies, 34 lenses and accessories. Inside measurements W x H x D 10 x 14.75 x 5 inches. Rugged nylon, water-repellent, urethane coated for extra durability. Well-arranged divider system for secure storage and easy access. Lightweight construction, padded shoulder straps and back for comfort. Front webbing ideal for storing a light jacket. Tripod carrying straps. Color Black with Olive. Front and Rear zippered pouches. Zippered full-length mesh pouch inside top cover. Divider system for secure storage and easy access. It is designed to hold two 35mm SLR bodies, 5-8 lenses, plus film and accessories.

It features a 3-way pan head for precise control and smooth movement. The 3-section tubular leg construction allows for exceptional stability indoors or out. Can hold your cameras, lenses, accessories and even a laptop computer. Durable, water-repellent nylon exterior. Padded interior dividers and easy-access storage pockets. The lens fits into the eyepiece holder of your EOS camera. Please see the Compatibility tab for a list of compatible EOS cameras. The lens fits into the eyepiece holder of your EOS camera. Please see the Compatibility tab for a list of compatible EOS cameras. This is because the microlens on the screen's matte is optimally shaped to increase defocusing near the point of focus. For general photography. It is brighter, less grainy and better balanced. The camera's AF points remain fully visible. It is for general photography. It is for close-up and microphotography, and for determining magnification ratios and composition. It is for general photography. Standard for EOS 3. It is an overall bright laser matte and incorporates center spot metering. Standard for EOS 1N RS. Made from Cordura Nylon. Large Zippered Front Accessory Pocket. Zippered Mesh Pocket Inside Top Lid. Two Side Accessory Zippered Pockets. Tripod Loops on Bottom. Five Movable, Padded Internal Dividers. Two Strap Handles with Grip. Removable Shoulder Strap. Rubber Feet for Ground Protection. The strap attaches to the eyelets at the sides of the camera. The cable connects to your camera and to the USB port on your PC or MAC Computer. Comes standard with the EOS 1Ds Mark III, 1D Mark IV, 1D Mark III, 1Ds Mark II, 1D Mark II N, 1D Mark II, 5D Mark II, 7D, 5D, 50D, 40D, 30D, 20D, 10D, Digital Rebel XTi, Digital Rebel XT and Digital Rebel. Please see Compatibility tab for compatible models. Features adjustable tripod straps, and high strength buckles for the main compartment. The Canon logo is embroidered on the top flap.

The Remote Switch works just like a shutter button, enabling halfway or complete pressing. This remote switch has a self-timer, interval timer, long exposure timer and exposure count setting feature. The timer can be set from 1 second to 99 hours. A new dial enables you to easily enter the numeric settings with a single thumb. The cable connects to your camera and to the USB port on

your PC or MAC Computer. Please see Compatibility tab for compatible models. Comes standard with the EOS 1Ds Mark III, 1D Mark IV, 1D Mark III, 1Ds Mark II, 1D Mark II N, 1D Mark II, 5D Mark II, 7D, 5D, 50D, 40D, 30D, 20D, 10D, Digital Rebel XTi, Digital Rebel XT and Digital Rebel. Please see Compatibility tab for compatible models. Interior Padding for Cushioning. Front Zippered Accessory Pocket. Touch Fastened Closure. Shoulder Strap. There are two versions of the EDSDK compatible with Windows or Macintosh. See your browsers documentation for specific instructions. To install your download click on the name of the downloaded file. The driver may be included in your OS or you may not need a driver. Recommended Drivers File Name Date File Size Optional Drivers File Name Date File Size Recommended Software File Name Date File Size Optional Software File Name Date File Size Recommended Manuals File Name Date File Size Optional Manuals File Name Date File Size If the new card already contains images, the numbering will continue from the last recorded image in the card. 3 Manual reset Resets the file number to 0001, and creates a new folder automatically. Manual 1 Selected by touching the eye in the face selection frame. 2 Can be selected with the Multicontrollers With automatic AF point selection, center spot metering will apply. Multispot metering Optical Viewfinder only 4 Centerweighted average metering The selectable metering modes can be restricted Custom Function. MF peaking and Focus Guide possible The active metering timer can be changed.

<http://www.raumboerse-luzern.ch/mieten/4-speed-manual-transmission-dodge>